

WILTSHIRE POLICE

# Salisbury CPT

Area Board Briefing

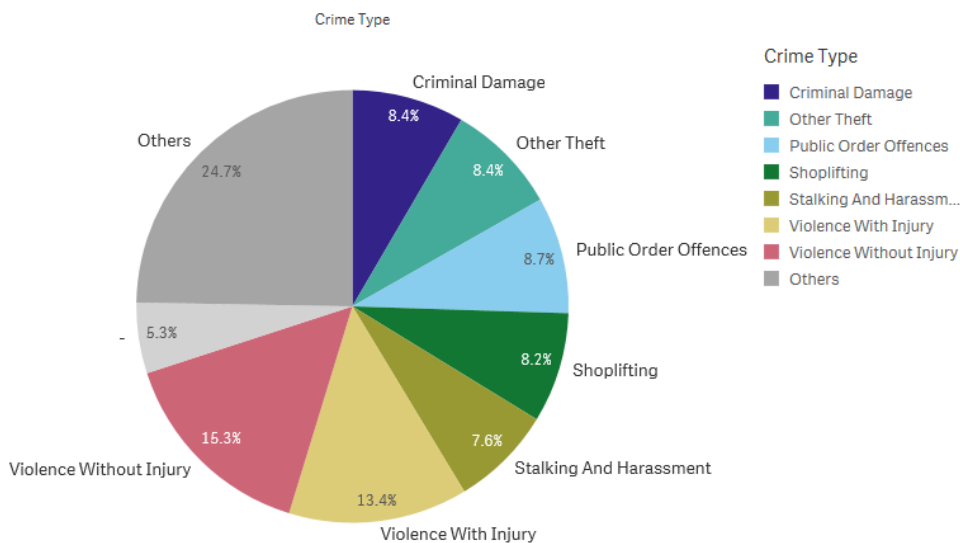


Proud to serve and protect our communities

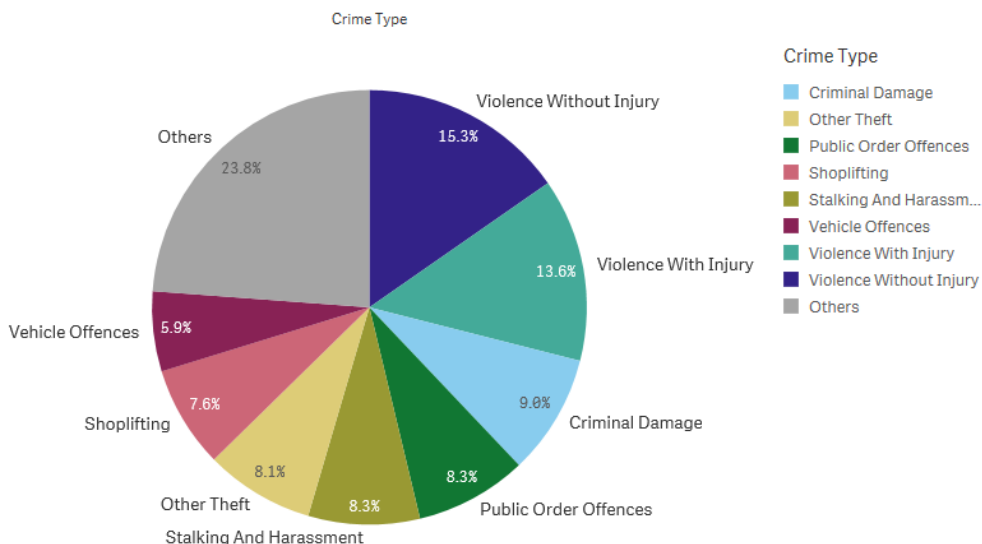
October 2020

## PERFORMANCE – YOUR AREA

### Salisbury CPT – Highest Crime Groups (Previous 12 months)



### Force Area CPT – Highest Crime Groups (Previous 12 months)



Salisbury CPT - Crime and incident demand for the 12 months to August 2020

WILTSHIRE POLICE

# Salisbury CPT

Area Board Briefing



**Proud** to serve and **protect** our communities

October 2020

## PERFORMANCE – FORCE-WIDE

- Wiltshire Police has had a decrease in the volume of recorded crime by 7.6% in the 12 months to August 2020 and continues to have one of the lowest crime rates in the country.
- Our service delivery remains consistently good.
- In August, we received 9,582 999 calls which we answered within 9 seconds on average, 12,986 101 calls which we answered within 28 seconds on average, and 14,054 CRIB calls which we answered within 2 minutes and 8 seconds on average.
- In August, we also attended 1,900 emergency incidents within 10 minutes and 45 seconds on average.
- Wiltshire Police has seen a 10.7% reduction in vehicle crime and a reduction of 22.3% in residential burglaries in the 12 months to August 2020.
- The Crime Survey of England & Wales recently ranked Wiltshire as one of the top forces (78.3%) nationally for public confidence. It covers the 12 months to March 2019. The publication can be found here: [WWW.CRIMESURVEY.CO.UK](http://WWW.CRIMESURVEY.CO.UK)

For more information on Wiltshire Police's performance please visit:

PCC's Website - <https://www.wiltshire-pcc.gov.uk/article/1847/Performance>

HMICFRS Website - <https://www.justiceinspectors.gov.uk/hmicfrs/police-forces/wiltshire/>

Police.uk - <https://www.police.uk/wiltshire>

For information on what crimes and incidents have been reported in the Salisbury Community Policing Team area, visit <https://www.wiltshire.police.uk/article/5445/Salisbury-Area-CPT> to view a crime and incident map and find links to more detailed data.

WILTSHIRE POLICE

# Salisbury CPT

Area Board Briefing



**Proud** to serve and **protect** our communities

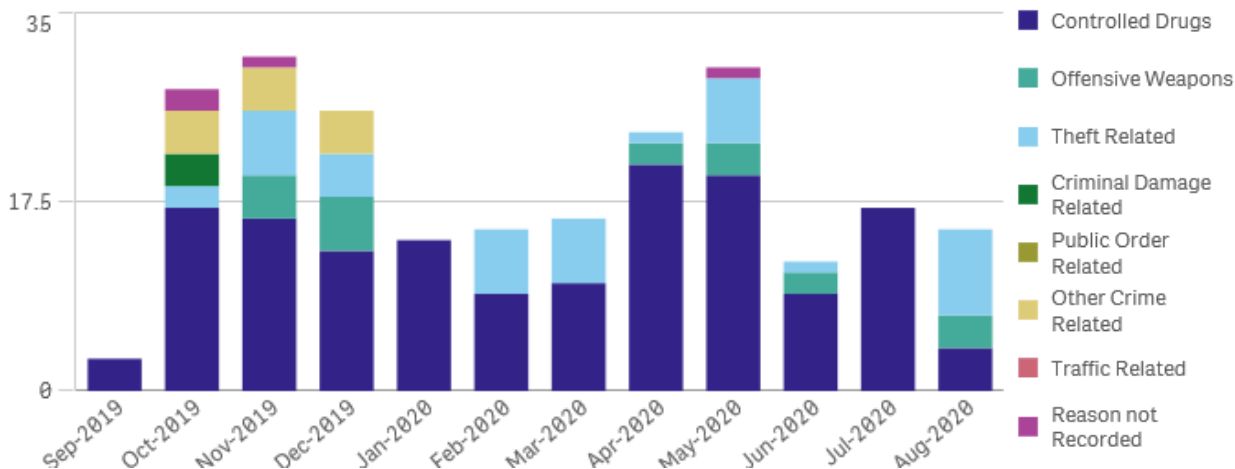
October 2020

## STOP SEARCH UPDATE

The police have the power to stop and search you if an officer has reasonable grounds to suspect that you have been involved in a crime, or think that you are in possession of a prohibited item. Prohibited items include drugs, weapons and stolen property. To find out more about stop and search, please visit [this section](#) of the Wiltshire Police website. You can also find more information on our independent scrutiny arrangements by visiting our force website.

During the 12 months leading to August 2020, 220 stop and searches were conducted in the Salisbury area. The charts below go into more detail about these searches.

**Stop and Searches by Grouped Reason**



Of the 220 stop and searches recorded in the Salisbury area, 76.4% related to a search for controlled drugs. November 2019 saw the highest volume of stop and searches conducted in this area.

WILTSHIRE POLICE

# Salisbury CPT

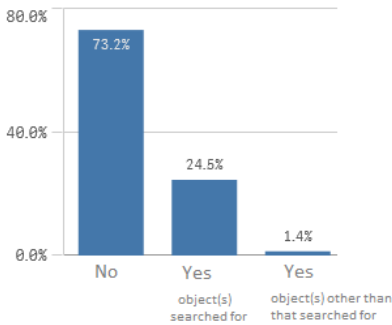
Area Board Briefing



**Proud** to serve and **protect** our communities

October 2020

### Stop and Searches by Object Found



During 73.2% of these searches, no object was found. In 25.9% of cases, an object was found. The remaining 0.9% did not have this information recorded.

Of these cases:

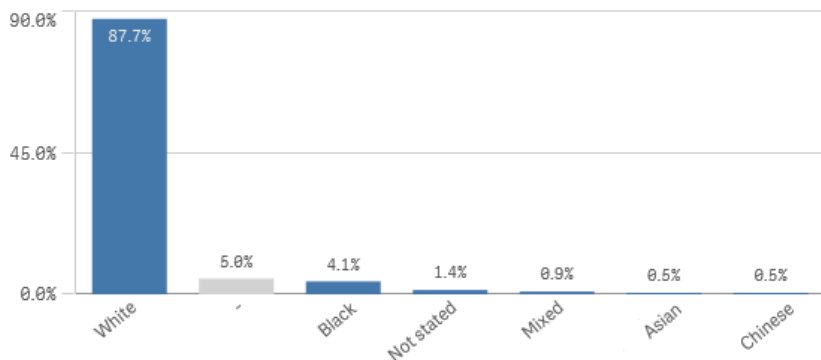
- 72.3% resulted in a no further action disposal;
- 26% resulted in police action being taken;
- 7.7% resulted in an arrest.

The subject of a stop and search does not need to define their ethnicity to the searching officer.

Of the stop and search subjects who defined their ethnicity as:

- White – 193 stop and searches in total. An object was found in 24.9% of cases and 25.9% resulted in police action;
- Black or Black British – 9 stop and searches in total. An object was found in 22.2% of cases and police action was taken;
- Mixed Ethnicity – 2 stop and searches in total. An object was found in 50% of cases and police action was taken;
- Asian or Asian British – 1 stop and search. No object was found and no police action was taken;
- Chinese or other ethnic group – 1 stop and search. No object was found and no police action was taken.

### Stop and Searches by Ethnicity of Subject



WILTSHIRE POLICE

# Salisbury CPT

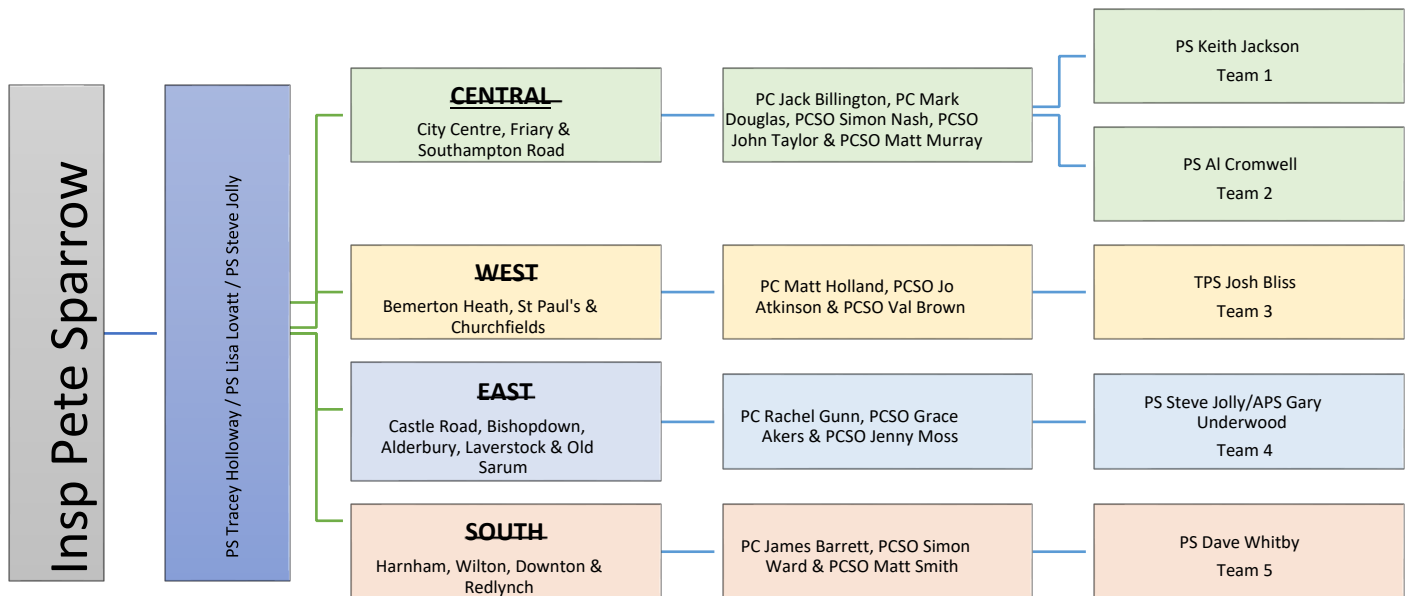
Area Board Briefing



Proud to serve and protect our communities

October 2020

## YOUR CPT – SALISBURY



New Beat Areas have now been established building better joined up working between the Neighbourhood and Response Teams. Each Response Team has been aligned to a Beat Area to encourage a better Problem Solving approach with anticipated increased community visibility and engagement encouraged.

**Inspector:** Pete Sparrow

**Neighbourhood Sergeant:** Sgt Tracey Holloway / Sgt Lisa Lovatt / Sgt Steve Jolly

**Neighbourhood Officers:**  
 Central: PC Jack Billington / PC Mark Douglas  
 West: PC Matt Holland  
 East: PC Rachel Gunn  
 South: PC James Barrett

**PCSOs:**  
 Central: PCSO Simon Nash / PCSO John Taylor / PCSO Matt Murray  
 West: PCSO Jo Atkinson / PCSO Val Brown  
 East: PCSO Grace Akers / PCSO Jenny Moss  
 South: PCSO Simon Ward / PCSO Matt Smith

WILTSHIRE POLICE

## Salisbury CPT

Area Board Briefing



Proud to serve and protect our communities

October 2020

## LOCAL PRIORITIES – SALISBURY

Central	<b>Barnard Street / Paynes Hill / Culver Street Car Park</b>	A Problem Solving approach with key stakeholder participation has assisted in the reduction of reports to this area. 30 patrols were recorded. The Closure Order obtained on a private premise in Barnard Street has been effective and has potentially assisted in the reduction of the reports.
	<b>Street Drinkers &amp; Public Space Protection Order (PSPO)</b>	Ongoing effort to work with the City Security Officers in addressing the street drinking issues. There are some overlapping aspects with the above priority and discussions continue with Wiltshire Council regarding enforcement of the PSPO.
	<b>Youth ASB</b>	This was an issue in the early part of August; however, the arrest of two particular individuals and strict bail conditions has resulted in a significant reduction on our demand.
West	<b>Demand reduction for shoplifting</b>	There have been an increase in reports of theft offences and ASB related matters in the area of Wilton Road. Officers will be patrolling the area to reduce the demand and deal with offences.
	<b>ASB</b>	Fisherton Recreational Ground has seen an increase in ASB and litter during the nice weather. Officers are patrolling the area to educate and deal with any reports of ASB.
	<b>Closure Orders</b>	9 Lapham Vale following reports of ASB at the address. The closure order prevents other people, other than the tenant, attending the address.
East	<b>Closure Orders</b>	Regular visits are made to addresses, which have been subjected to Closure Orders to ensure compliance. Current Orders are in place at: <ul style="list-style-type: none"> <li>• 71 Rhodes-Morehouse Way, Longhedge (exp. 16 Oct)</li> <li>• 36 Nicolson Vale, Longhedge (exp. 6 Oct)</li> <li>• 25 Down View Road (exp. 30 Sept)</li> </ul>

WILTSHIRE POLICE

# Salisbury CPT

Area Board Briefing



**Proud** to serve and **protect** our communities

October 2020

	<p><b>ASB</b></p>	<p>Castle Hill Country Park – We have had reports of anti-social behaviour from groups of young people within the Country Park as well as reports of someone driving a quad bike around the area.</p> <p>Whiteparish – The Parish Council raised concerns in relation to anti-social behaviour near the skate park. We have asked officers to conduct patrols of the area to identify those involved. We have also been aware of some ongoing anti-social behaviour in Green Close. Wiltshire Council are working with local police to try to resolve this matter.</p>
--	-------------------	--

<p><b>South</b></p>	<p><b>ASB in Downton</b></p>	<p>Closure Order obtained at 14 Roman Meadow, Downton preventing entry to anyone other than occupant (expires 7 October). This is an ongoing area of youth ASB, criminal damage and drug intelligence centred around one address with ongoing partnership work to improve situation.</p> <p>An interim injunction has been granted by the court for June Martin.</p>
	<p><b>Speeding Vehicles</b></p>	<p>Community Speed Watch (CSW) have now returned to our streets. Staff are being encouraged to conduct speed checks alongside CSW where possible.</p>
	<p><b>Rural Crime inc. Hare Coursing, Fly-Tipping &amp; Theft offences</b></p>	<p>Visibility in the rural areas is vital. Fly-tipping is increasing and we have conducted joint operations with Wiltshire Council and Trading Standards surrounding waste carriage licenses. 30 vehicles stopped with four investigations started and one vehicle seized for no insurance.</p>
	<p><b>Disruption</b></p>	<p>We have an Organised Crime Group living within this area and disruption of their activity is a regular occurrence.</p>



WILTSHIRE POLICE

## Salisbury CPT

Area Board Briefing



Proud to serve and protect our communities

October 2020

## HIGH LEVEL PCC UPDATES

- Proactive policing:** In addition to the new intakes of police officers that I covered in my update last month, I have been pleased to see the Force align resources to proactively carry out its enforcement of the Coronavirus Regulations through the launch of Operation Adamo. It is crucial that we continue to reassure the communities we serve that we are acting on intelligence and reports received of breaches of the restrictions and having dedicated PCSOs to focus on responding to these issues is a great step in demonstrating how we will continue to police the pandemic proportionately and enforce the rules where necessary.

The additional funds generated by the precept increase earlier this year have allowed investment to be made into improving proactive policing – the launch of Operation Fortitude (described below) was made possible thanks to the additional income generated by the precept increase and the Force has also recently bolstered its support to tackling rural crime through a new look Rural Crime Team. We live in a predominantly rural county so the policing service must be tailored to the needs of our diverse communities. While it is crucial to prevent violent crime, there is a specific need to protect rural communities from the distinct threats they face. In my Police and Crime Plan, I promised to protect rural communities. The introduction of additional dedicated officers to the Rural Crime Team will allow the Force to run extra operations, take geographical responsibility of areas to gain further intelligence, and reassure our communities that we are committed to tackling rural crime.
- COVID19 update:** We continue to be impressed by the high levels of compliance with the current restrictions within our communities. At the end of last month we published the latest summary showing the number of Fixed Penalty Notices we have issued and it is good to see that the volume of FPNs issued remains low – this demonstrates the Force's emphasis on engaging, educating and encouraging people to comply with the rules continues to have the desired effect in protecting our communities. This covers the period from 24 July to 27 September 2020 and you can find it on both [my website](#) as well as the [Wiltshire Police site](#).
- Celebrating Black History Month:** I am proud to see us teaming up with partners from Wiltshire Council to celebrate Black History Month with a conference on Tuesday 20 October featuring talks from leading author Cherron Inko-Tariah MBE, Rob Neil OBE, Head of Embedding Culture Change at the Department for Education and Organisational Psychologist John Amaechi OBE, the first British basketball player to have a career in the US National Basketball Association. This promises to be a fantastic event - it's open to all although spaces are limited – [for details see the Eventbrite booking site](#). Black History Month is a wonderful opportunity to celebrate the diversity of people who live and work in our county as we continue to strive to ensure that Wiltshire Police truly reflects the communities of Wiltshire and Swindon.
- Modernising the policing estate:** In order to ensure that the buildings we use within policing are sufficient for 21<sup>st</sup> century policing and remain efficient and cost effective I have a 5 year Estates



WILTSHIRE POLICE

## Salisbury CPT

Area Board Briefing



Proud to serve and protect our communities

October 2020

Strategy that outlines how we plan to modernise the buildings we need, rationalise the ones we don't and work with our partners to have shared public facilities wherever possible. We are making good progress against the plan despite the challenges of Covid – we recently completed the refurbishment of Royal Wootton Bassett station, we are making progress in providing a new and improved site for our Warminster CPT and last month we announced plans to work with Tidworth Town Council on the development of a new Civic Centre. The Covid pandemic has changed, at least in the immediate term, the way that we work and some of these changes may endure once life has returned to relative normality. It's therefore important that the Estates Strategy continues to meet the needs of our operational and support staff across the county – I will be publishing an update to the Strategy in due course.

## HIGH LEVEL FORCE UPDATES

- Operation Adamo:** This month, as part of our local response to the challenges of the Covid-19 pandemic we launched Operation Adamo. Under the operation, Police Community Support Officers will be carrying out high-visibility proactive patrols to encourage members of the public to comply with the COVID guidance and regulations, and where appropriate take enforcement action. Wiltshire Police has tasked dedicated groups of PCSOs with monitoring behaviour and responding to reports from the public. This proactive, targeted work, will also be supported by our frontline police officers, staff and special constables, who will continue to work hard to police the restrictions alongside their everyday duties, as they have been doing since the regulations started. It is clear from our engagement with the communities in Swindon and Wiltshire that, while the vast majority of people were complying with the Covid regulations, more needed to be done to target the small minority who were deliberately and repeatedly flouting the rules. These proactive teams of PCSOs allow us to respond swiftly to concerns from the public and also carry out high-visibility patrols of areas or businesses where we have received information about repeated breaches.
- COVID19 update:** We are pleased to report that we are still seeing a very high level of compliance within our communities with regards to the Coronavirus Regulations. Our officers continue to focus on engaging with our communities first and foremost and, for the most part, this continues to be effective. To help ensure we remain proportionate in our approach, we are recording our activity where we educate, encourage, engage and enforce (and on the latter point all FPNs are considered and reviewed through an independent scrutiny panel). The Government has now brought in tougher penalties for those who do not wear face coverings in areas where it is now mandated to do so and for those who organise, facilitate or attend any large gathering or unlicensed music event. These types of unlawful events place the public at a high level of risk and are likely to spread the virus. If we come across these types of events we will actively look to use our powers. Coronavirus remains a deadly threat and it should be everyone's priority to stop the spread of the virus and save lives.

WILTSHIRE POLICE

## Salisbury CPT

Area Board Briefing



Proud to serve and protect our communities

October 2020

- **Tackling serious offending in our communities:** This month we launched 'Fortitude' – a newly created unit tasked with proactively targeting the most serious offenders in our communities including county lines offenders, prolific offenders and others identified as posing high risk to communities. This initiative has been made possible thanks to the public agreeing to the Police and Crime Commissioner's increase in the police precept which has allowed the recruitment of a further 16 front line police officers. Crimes carried out by even a few prolific offenders are felt throughout a community; by specifically targeting repeat offenders and those who commit the most crimes in our communities, we hope to see a dramatic impact on criminality within our communities. Fortitude is a long-term initiative and teams will be working with colleagues to bring about a long-term change in the communities where they are based - to meet the priorities set out in the PCC's Police and Crime Plan.

## GET INVOLVED

- You can keep up to date with the latest news and alerts in your area by signing up to our Community Messaging service – [www.wiltsmessaging.co.uk](http://www.wiltsmessaging.co.uk)
- You can follow your CPT on social media
  - [Salisbury Police Facebook](#)
  - [Salisbury Police Twitter](#)

More information on your CPT area can be found here: [www.wiltshire.police.uk](http://www.wiltshire.police.uk) and here [www.wiltshire-pcc.gov.uk](http://www.wiltshire-pcc.gov.uk)