

WILTSHIRE POLICE

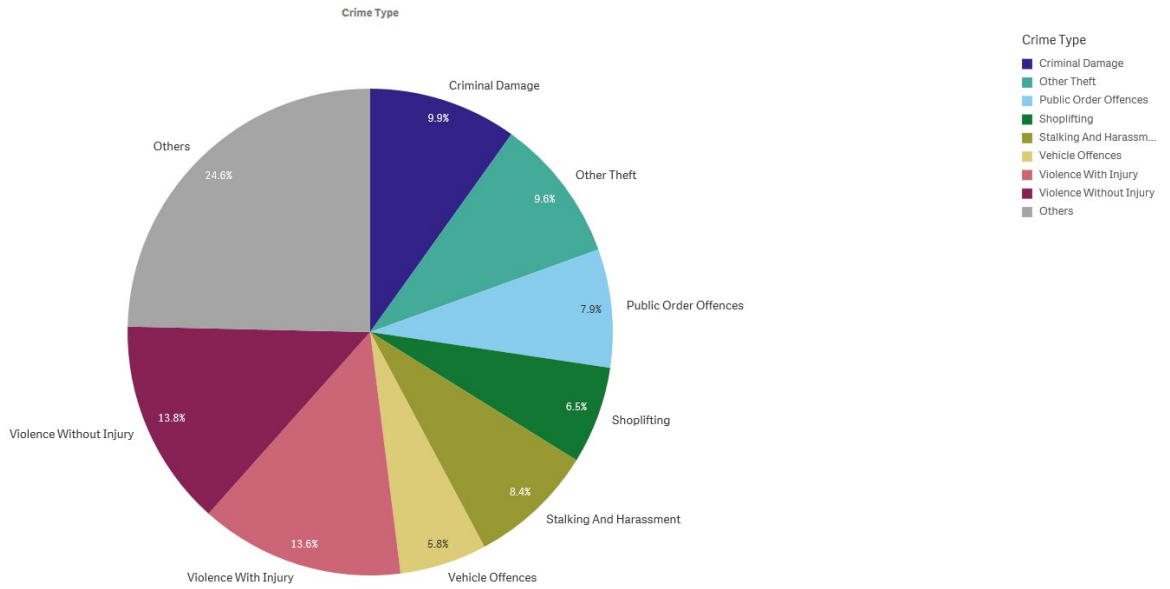
Salisbury CPT

Area Board Briefing

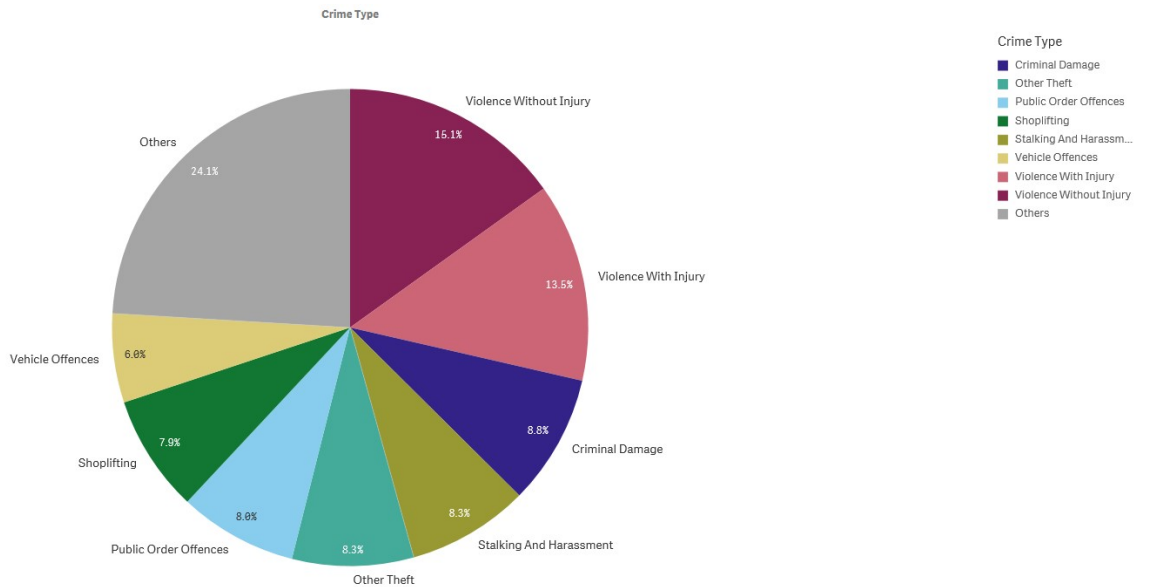


PERFORMANCE – YOUR AREA

Salisbury CPT – Highest Crime Groups (Previous 12 months)



Force Area CPT – Highest Crime Groups (Previous 12 months)



Salisbury CPT - Crime and incident demand for the 12 months to July 2020

WILTSHIRE POLICE

Salisbury CPT

Area Board Briefing



Proud to serve and protect our communities

September 2020

PERFORMANCE – FORCE-WIDE

- Wiltshire Police has had a decrease in the volume of recorded crime by 5.8% in the 12 months to July 2020 and continues to have one of the lowest crime rates in the country.
- Our service delivery remains consistently good.
- In July, we received 8,974 999 calls which we answered within 8 seconds on average, 13,513 101 calls which we answered within 28 seconds on average, and 14,975 CRIB calls which we answered within 2 minutes and 19 seconds on average.
- In July, we also attended 1,899 emergency incidents within 10 minutes and 8 seconds on average.
- Wiltshire Police has seen an 8.2% reduction in vehicle crime and a reduction of 17.8% in residential burglaries in the 12 months to July 2020.
- The Crime Survey of England & Wales recently ranked Wiltshire as one of the top forces (78.3%) nationally for public confidence. It covers the 12 months to March 2019. The publication can be found here: WWW.CRIMESURVEY.CO.UK

For more information on Wiltshire Police's performance please visit:

PCC's Website - <https://www.wiltshire-pcc.gov.uk/article/1847/Performance>

HMICFRS Website - <https://www.justiceinspectorates.gov.uk/hmicfrs/police-forces/wiltshire/> Police.uk
- <https://www.police.uk/wiltshire>

For information on what crimes and incidents have been reported in the Salisbury Community Policing Team area, visit <https://www.wiltshire.police.uk/article/5445/Salisbury-Area-CPT> to view a crime and incident map and find links to more detailed data.

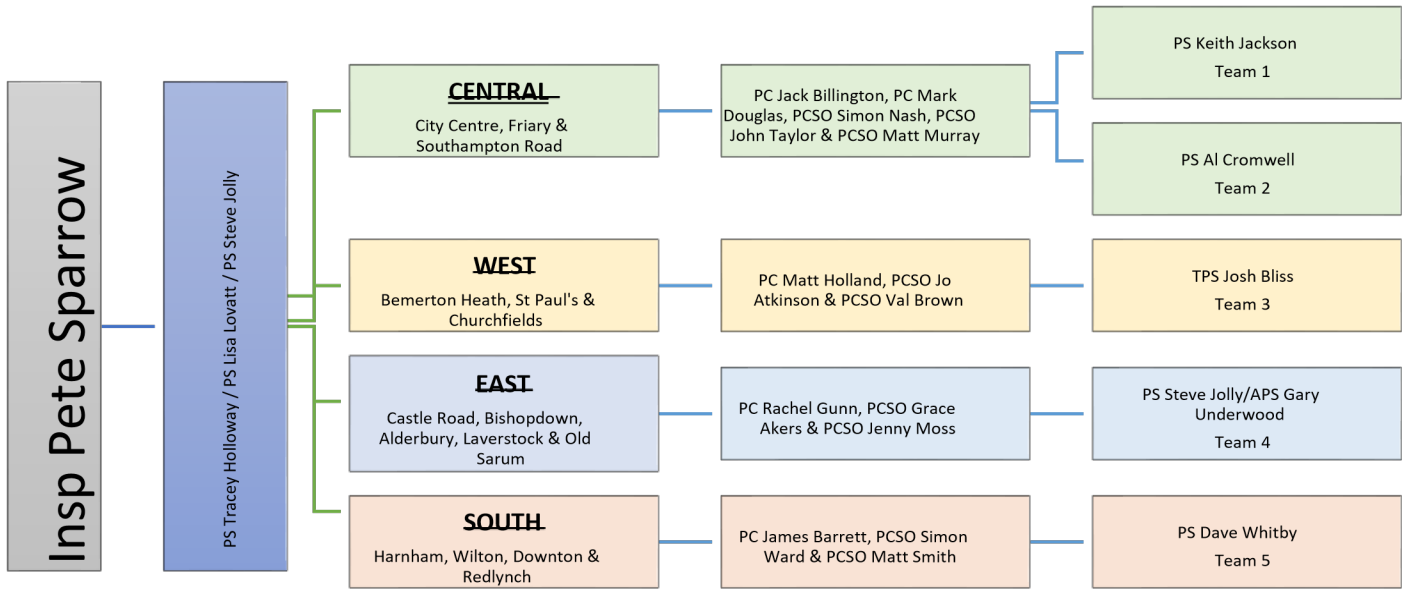
WILTSHIRE POLICE

Salisbury CPT

Area Board Briefing



YOUR CPT – SALISBURY

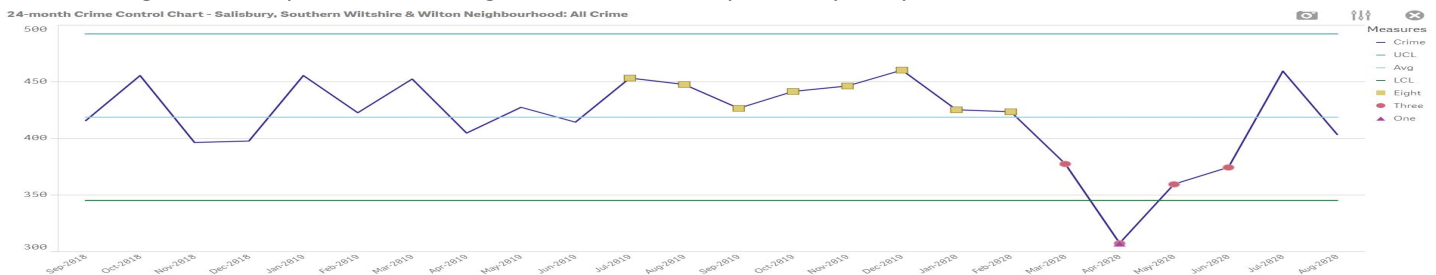


The new Beat Areas have now been established building better joined up working between the Neighbourhood and Response Teams. Each Response Team has been aligned to a Beat Area to encourage a better Problem Solving approach with anticipated increased community visibility and engagement encouraged.

Exception Reporting August - This is an opportunity to understand crime trends over a 2 year period. This reporting method helps to assess crime trends based on seasonal trends and can assist identifying emerging trends. The central blue line is the 2 year average with the green lines representing the Upper and Lower Control Limits. For the statistically minded the One/Three/Eight markers are where we have consecutive data points that are above or below 1 standard deviation from the mean.

Salisbury CPT:

This chart provides us with a visual impact of the Covid Lockdown and subsequent bounce back to normality. It is also worth noting that the 2 year mean average will have been impacted by this period.



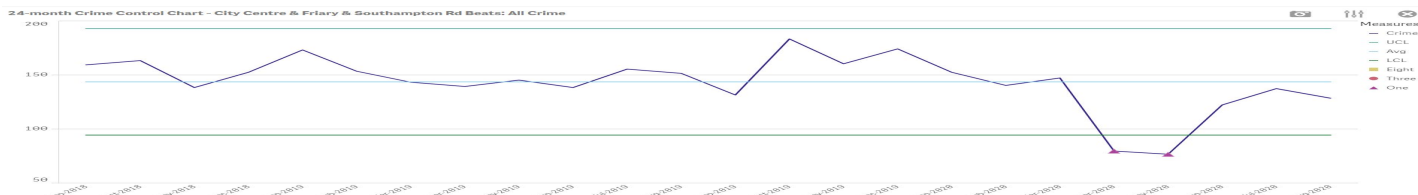
WILTSHIRE POLICE

Salisbury CPT

Area Board Briefing



Central:



All Crime – 127 reported crimes against an average of 143. August 2019 saw 151 offences.

Possession of Weapons – 3 month High (3 consecutive months above average). 3 offences were recorded over the month (average of 1.67).

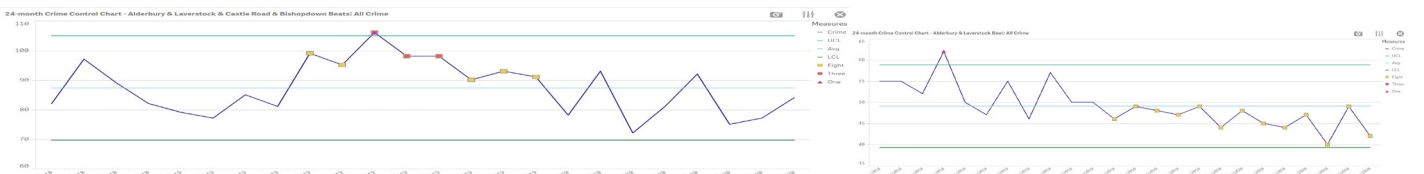
West:



All Crime – 99 reported crimes against an average of 92. August 2019 saw 102 offences reported.

Violence Against the Person – 1 Month High with 43 reported offences (34 Ave) that is largely due to Violence without Injury offences (21). The rise is in line with an increase in Domestic Abuse reports which we will continue to work on opportunities to protect and support victims in this area.

East:



All Crime – 84 reported crimes against an average of 87.42. August 2019 saw 98 offences reported. For the Alderbury and Laverstock Beat Area, this is the 13th month in a row that reported crime is below the 2 year average. Of particular note is Vehicle Crime where the monthly reports have been below average (2.58) for 8 months. Drug Offences report a short term high of 5 offences last month.

South:



All Crime - 92 offences reported against an average of 95.13

Robbery is our only short term high with 5 offences reported (2 in Downton & 3 in Harnham) against an average of 0.42. All of these offences remain under investigation, although worth noting that 3 offences have seen offenders arrested and bail conditions applied.

WILTSHIRE POLICE

Salisbury CPT

Area Board Briefing



LOCAL PRIORITIES – SALISBURY

AREA	PRIORITY	UPDATE
Central	Barnard Street / Paynes Hill / Culver Street Car Park	A Problem Solving approach with key stakeholder participation has assisted in the reduction of reports to this area. 30 patrols were recorded. The Closure Order obtained on a private premise in Barnard Street has been effective and has potentially assisted in the reduction of the reports.
	Street Drinkers & Public Space Protection Order (PSPO)	Ongoing effort to work with the City Security Officers in addressing the street drinking issues. There are some overlapping aspects with the above priority and discussions continue with Wiltshire Council regarding enforcement of the PSPO.
	Youth ASB	This was an issue in the early part of August; however, the arrest of two particular individuals and strict bail conditions has resulted in a significant reduction on our demand.
West	Demand reduction for shoplifting	There have been an increase in reports of theft offences and ASB related matters in the area of Wilton Road. Officers will be patrolling the area to reduce the demand and deal with offences.
	ASB	Fisherton Recreational Ground has seen an increase in ASB and litter during the nice weather. Officers are patrolling the area to educate and deal with any reports of ASB.
	Closure Orders	9 Lapham Vale following reports of ASB at the address. The closure order prevents other people, other than the tenant, attending the address.
East	Closure Orders	Regular visits are made to addresses, which have been subjected to Closure Orders to ensure compliance. Current Orders are in place at: <ul style="list-style-type: none"> • 71 Rhodes-Morehouse Way, Longhedge (exp. 16 Oct) • 36 Nicolson Vale, Longhedge (exp. 6 Oct) • 25 Down View Road (exp. 30 Sept)

WILTSHIRE POLICE

Salisbury CPT

Area Board Briefing



	ASB	<p>Castle Hill Country Park – We have had reports of anti-social behaviour from groups of young people within the Country Park as well as reports of someone driving a quad bike around the area.</p> <p>Whiteparish – The Parish Council raised concerns in relation to antisocial behaviour near the skate park. We have asked officers to conduct patrols of the area to identify those involved. We have also been aware of some ongoing anti-social behaviour in Green Close. Wiltshire Council are working with local police to try to resolve this matter.</p>
South	ASB in Downton	<p>Closure Order obtained at 14 Roman Meadow, Downton preventing entry to anyone other than occupant (expires 7 October). This is an ongoing area of youth ASB, criminal damage and drug intelligence centred around one address with ongoing partnership work to improve situation.</p> <p>An interim injunction has been granted by the court for June Martin.</p>
	Speeding Vehicles	<p>Community Speed Watch (CSW) have now returned to our streets. Staff are being encouraged to conduct speed checks alongside CSW where possible.</p>
	Rural Crime inc. Hare Coursing, Fly-Tipping & Theft offences	<p>Visibility in the rural areas is vital. Fly-tipping is increasing and we have conducted joint operations with Wiltshire Council and Trading Standards surrounding waste carriage licenses. 30 vehicles stopped with four investigations started and one vehicle seized for no insurance.</p>
	Disruption	<p>We have an Organised Crime Group living within this area and disruption of their activity is a regular occurrence.</p>

WILTSHIRE POLICE

Salisbury CPT

Area Board Briefing



HIGH LEVEL PCC UPDATES

- **PCC Annual Report:** Last month, the Police and Crime Commissioner published his annual report for 2019/20. The report sets out how the OPCC priorities are being met and highlights what additional work is being carried out to ensure that wider policing priorities reflect the concerns from the Wiltshire and Swindon communities he serves. You can read the full report [here](#).
- **Frontline recruitment is on track:** Wiltshire's first 40 student police officers on the new police degree apprenticeship are nearly half way through their initial 23 week classroom training before deployment to Community Policing Teams in December. The next cohort of 20 students start their training on 19 October and by March 2021 we are on target to have 1,050 police officers in Force. We also welcomed 20 new student Police Community Support Officers (PCSOs) who started their 12 week training in August and we've had a huge response to our PCSO recruitment campaign in July with 179 applicants, a record level of interest in this important community facing role.
- **COVID19 update:** We continue to be impressed by the high levels of compliance with the current restrictions within our communities. Although officers have not issued any Fixed Penalty Notices for breaches to these restrictions since May, we remain fully committed to being transparent when it comes to enforcement. You can see our latest FPN Summary Overview report [here](#). The OPCC is also in the process of distributing the new COVID19 Response Fund – a £50,000 funding stream supporting community and voluntary groups that are struggling to keep their organisation going or are facing unexpected costs due to the Coronavirus pandemic.

HIGH LEVEL FORCE UPDATES

- **Officer and staff assaults review:** The views of more than 40,000 officers and staff have informed the Officer and Staff Safety Review published by the National Police Chiefs' Council (NPCC) last week. The review, which is the largest ever survey of the police workforce, was commissioned to examine why police forces are seeing a rise in assaults and increased violence against officers. Here in Wiltshire, we are not immune to assaults against our frontline officers, staff and volunteers and this is something we have seen increase year on year. Even as our officers and staff have been out in our communities trying to provide reassurance during the COVID pandemic, they are still being kicked, spat at and abused. We've already introduced a large number of improvements to best protect our staff including the introduction of spit and bite guards and increased the number of officers who carry taser but this is also a societal problem that needs to change. We welcome this review and will continue to invest in anything which protects our officers and staff.
- **COVID19 update:** We are pleased to report that we are still seeing a very high level of compliance within our communities with regards to the Coronavirus Regulations. Our officers continue to focus on engaging with our communities first and foremost and, for the most part, this continues to be effective. The Government has now brought in tougher penalties for those

WILTSHIRE POLICE

Salisbury CPT

Area Board Briefing



who do not wear face coverings in areas where it is now mandated to do so and for those who organise, facilitate or attend any large gathering or unlicensed music event. These types of unlawful events place the public at a high level of risk and are likely to spread the virus. If we come across these types of events we will actively look to use our powers. Coronavirus remains a deadly threat and it should be everyone's priority to stop the spread of the virus and save lives.

- **Demand campaign:** The lifting of lockdown restrictions in July heightened some of the demands Wiltshire Police face, particularly those related to public order, violence against the person and anti-social behaviour. In comparison to last summer, we are seeing an increase of 26% in public order offences and an 18% increase in reports of anti-social behaviour. Last month, we launched a campaign with the aim of highlighting some of these additional summer demands, and whilst there has been some reduction in these offences as a result, compared to last year we are still seeing more of these crime types. We continue to proactively work with the public and our partners to not only reduce this demand, but to prevent crimes from happening in the first place. You can find out more about the summer demand campaign on our website and by following #summerdemand on social media.

GET INVOLVED

- You can keep up to date with the latest news in your area by signing up to our Community Messaging service – www.wiltsmessaging.co.uk
- You can follow your CPT on social media
- [Salisbury Police Facebook](#)
- [Salisbury Police Twitter](#)

More information on your CPT area can be found here: www.wiltshire.police.uk and here www.wiltshire-pcc.gov.uk